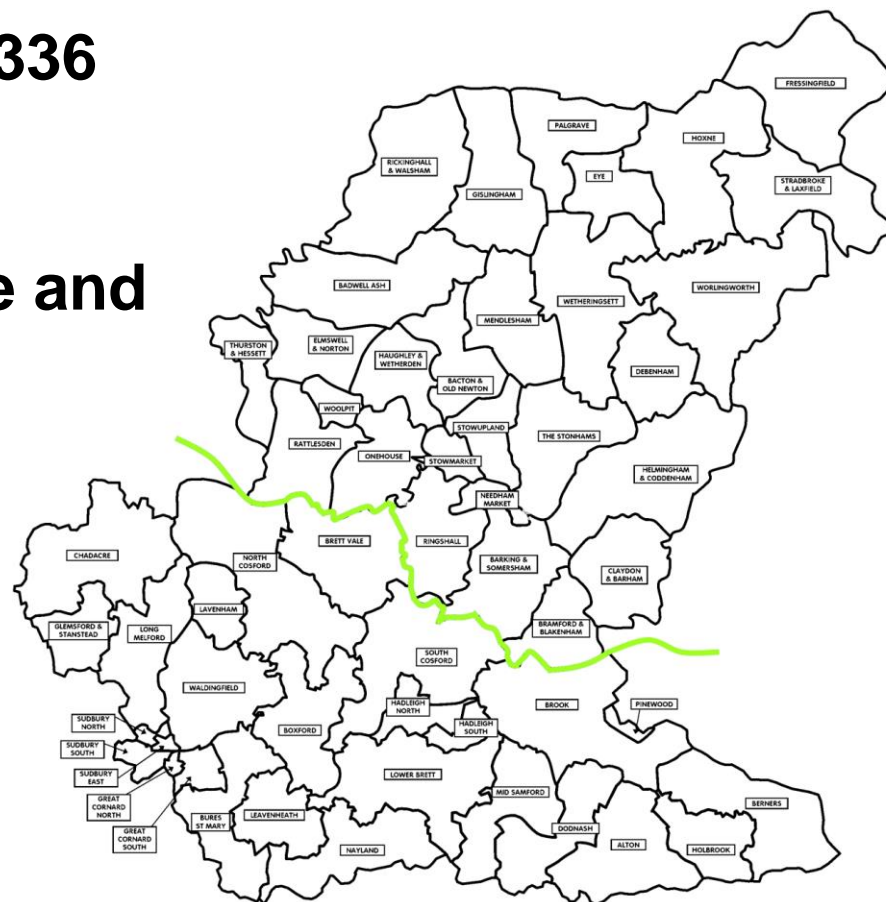


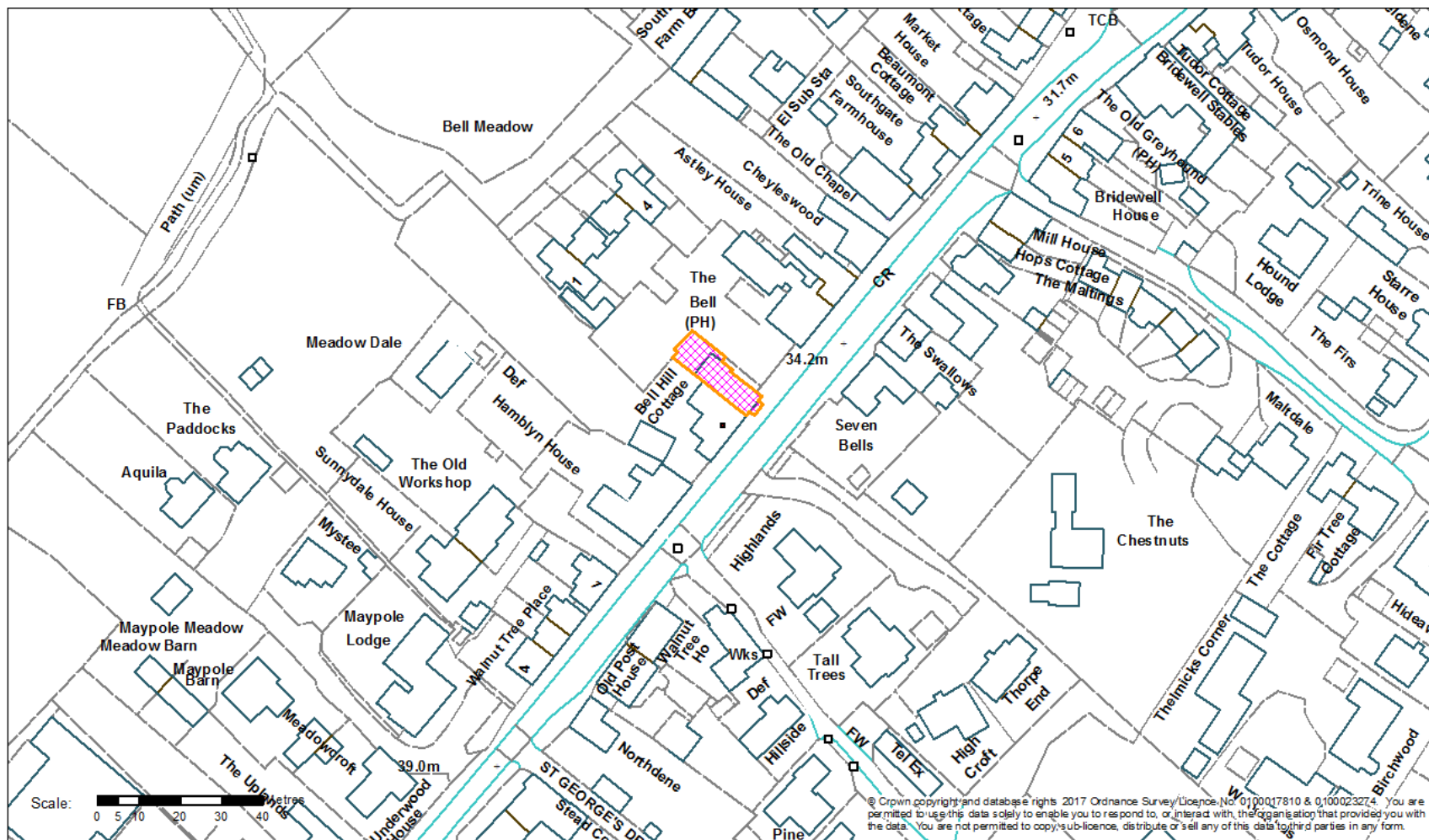
**Application No: DC/19/00336  
and DC/19/00337**

**Address: Bell Hill Cottage and  
Newsagent  
The Street  
Rickinghall Inferior**



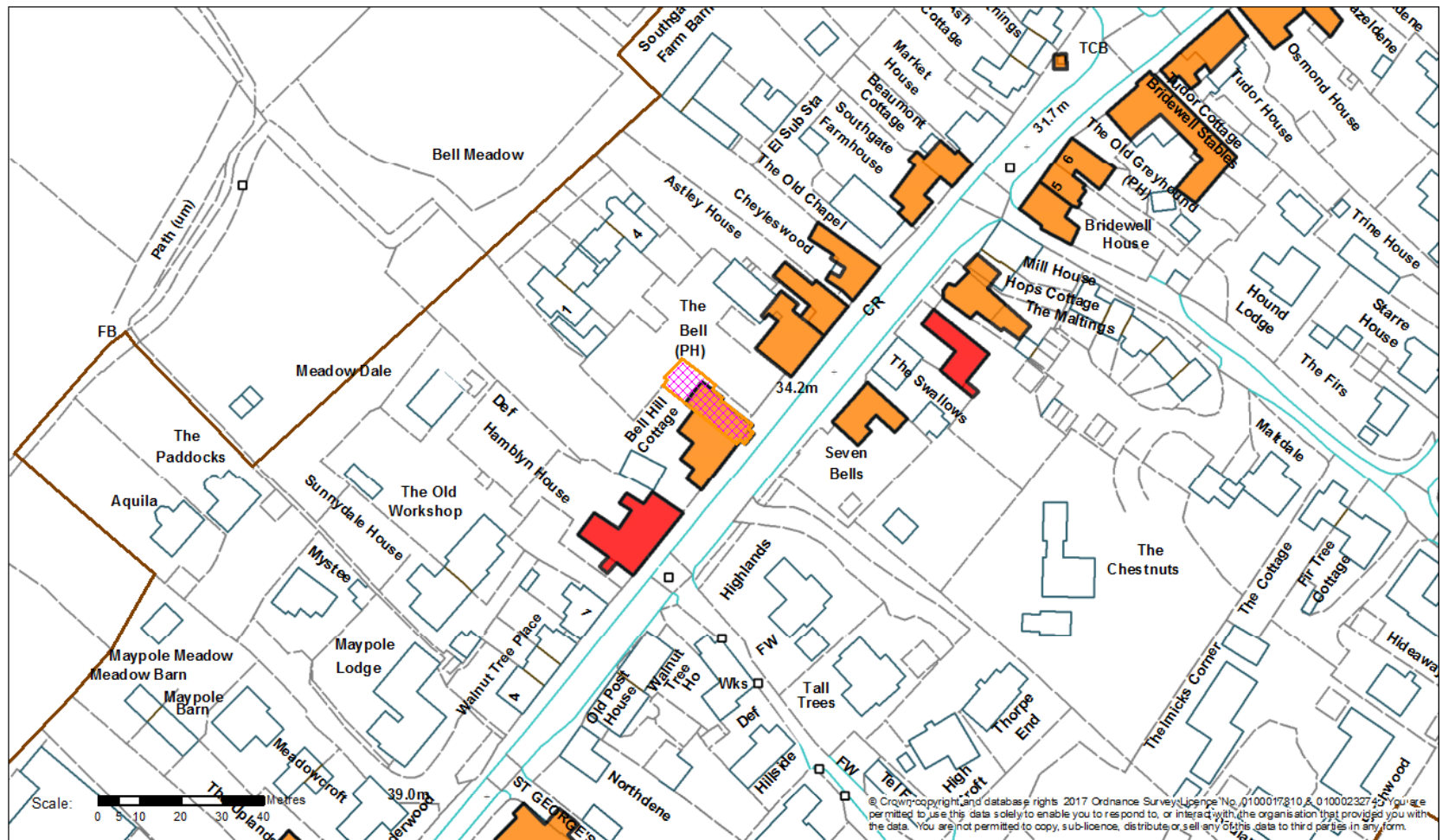
## Site Location Plan

Slide 2

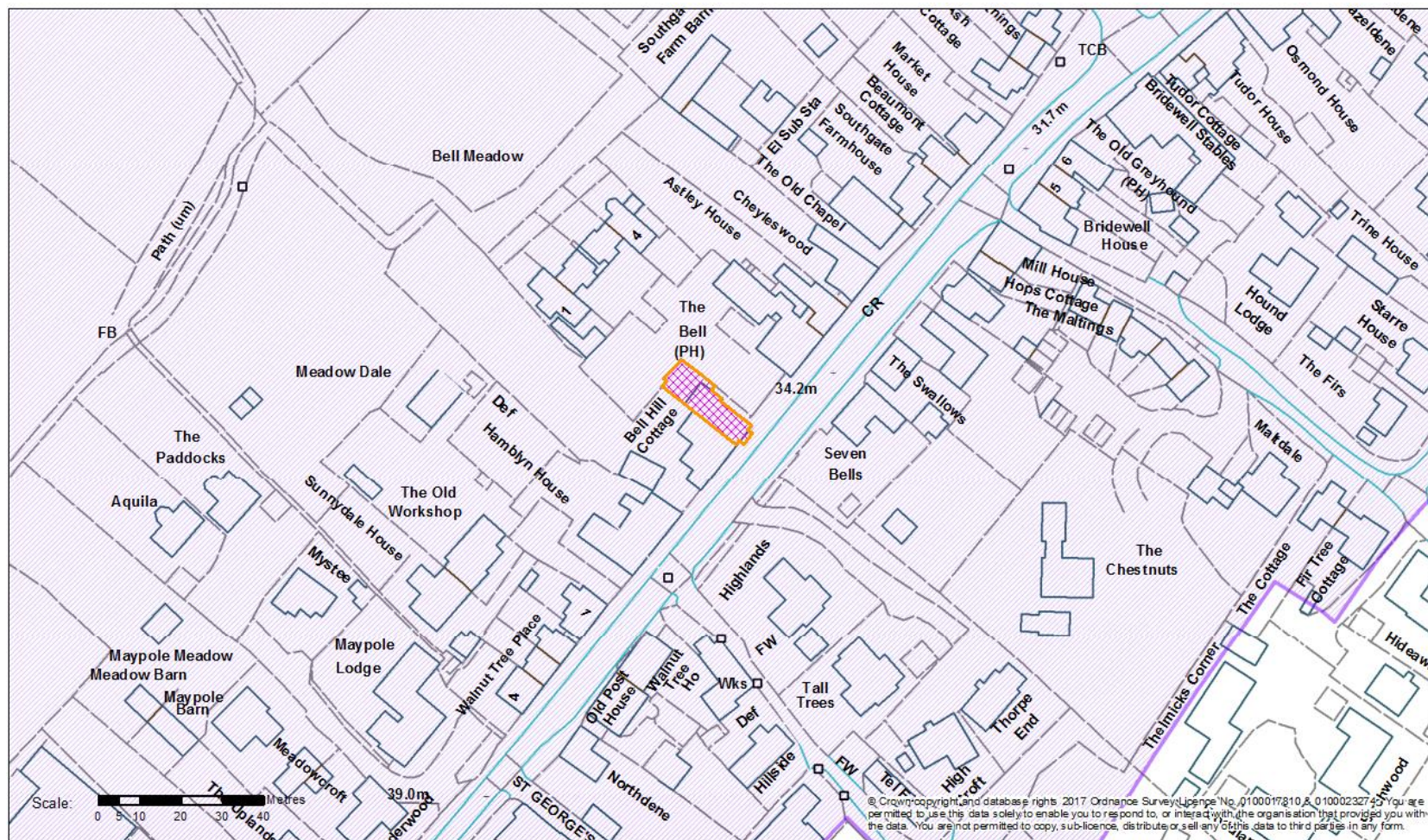


# Constraints Map

Slide 3













## Aerial Map

Slide 6







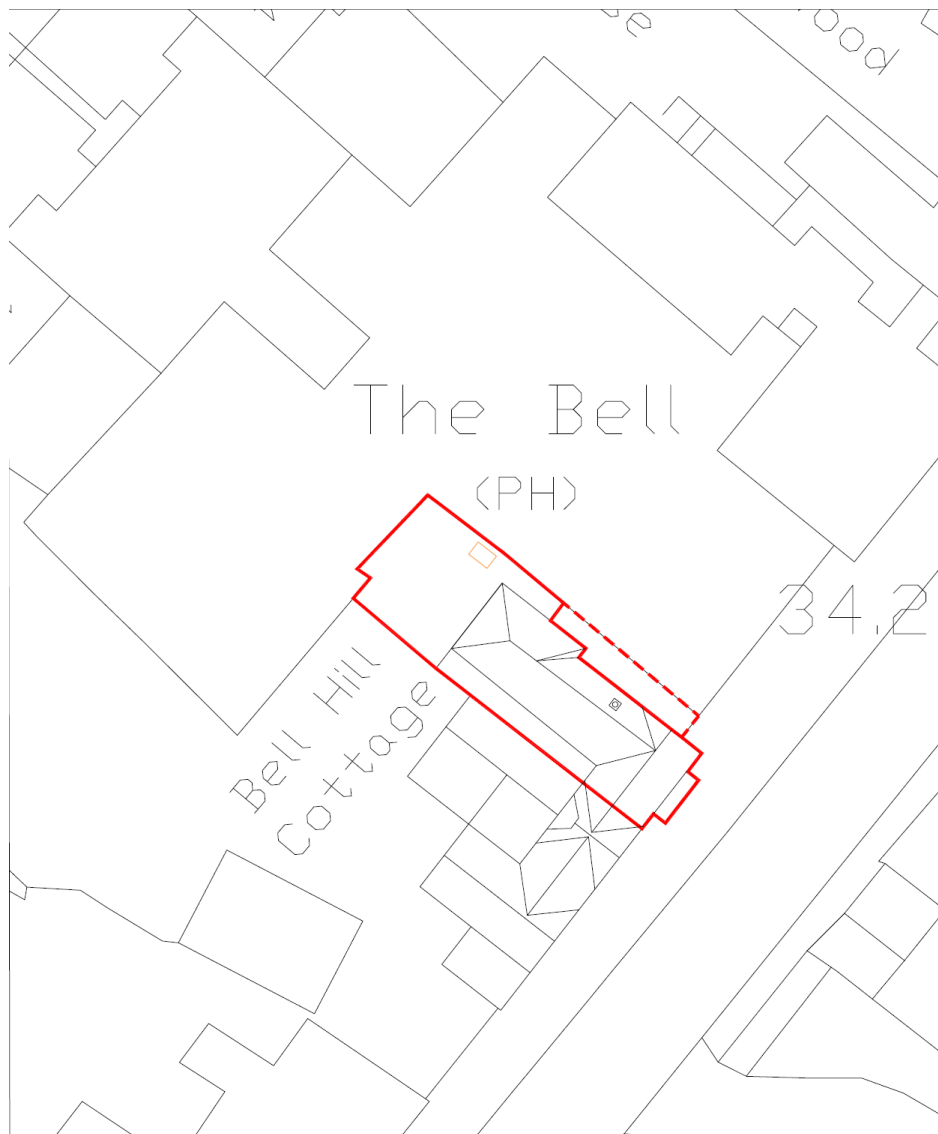






## Block Plan/Site Layout

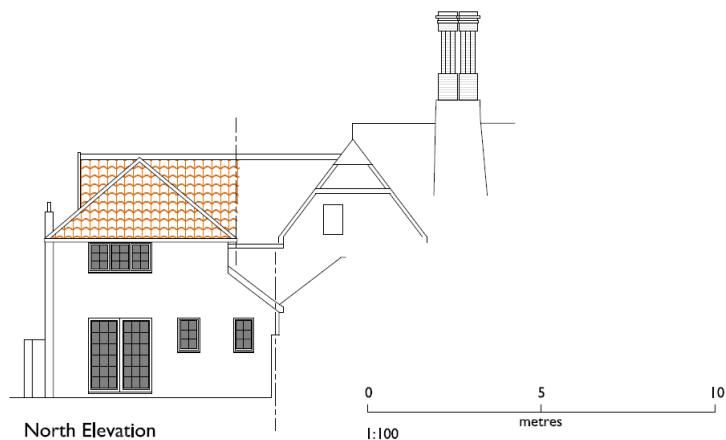
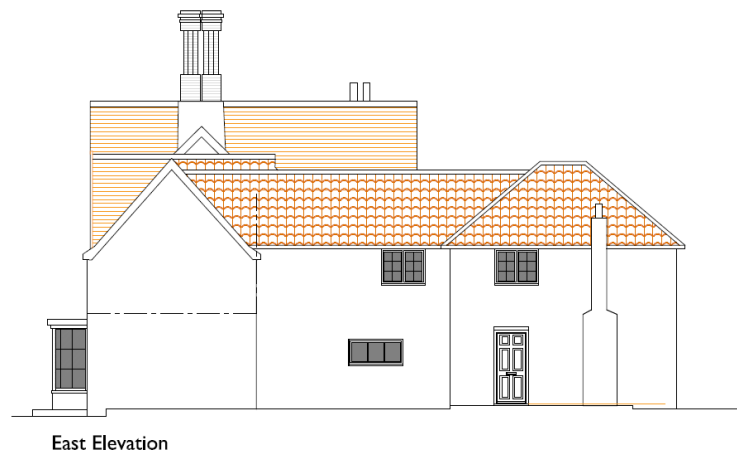
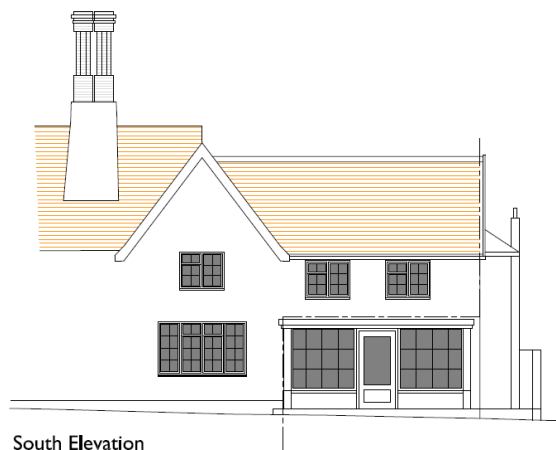
Slide 9





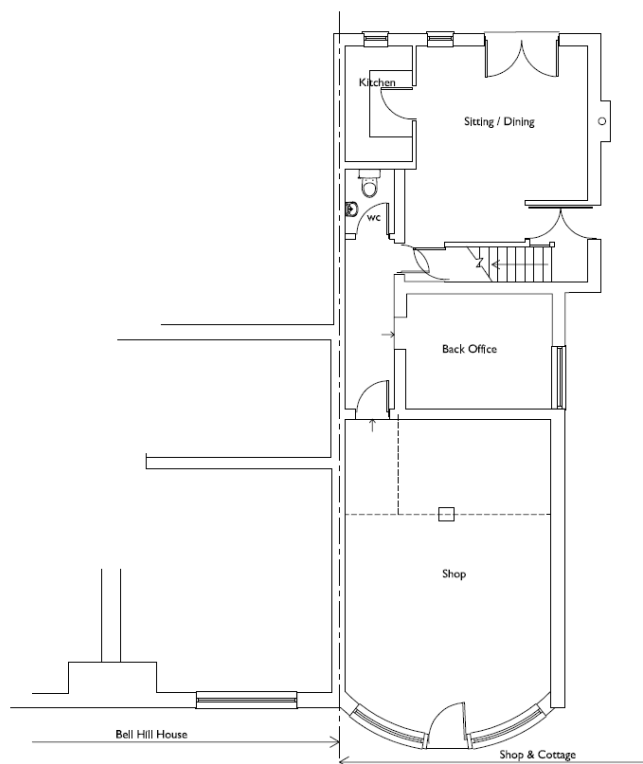
## Existing Elevations

Slide 10

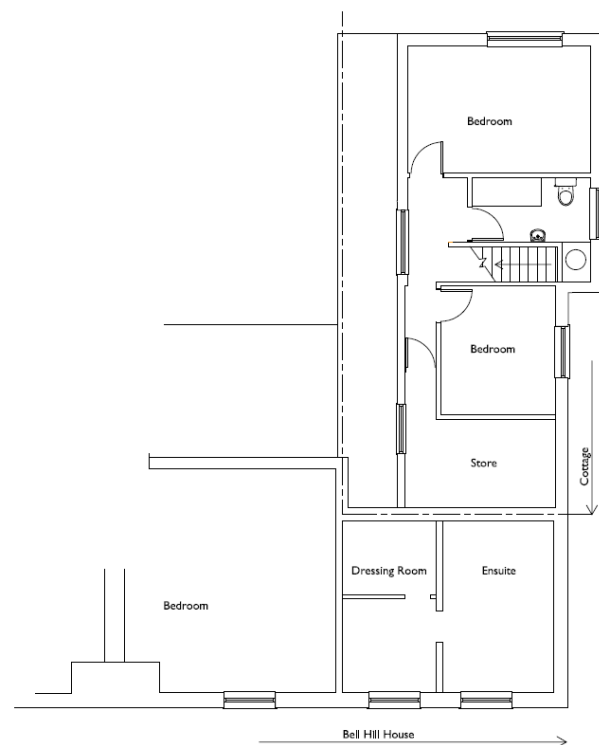


0 5 10  
metres  
1:100





Ground Floor Plan

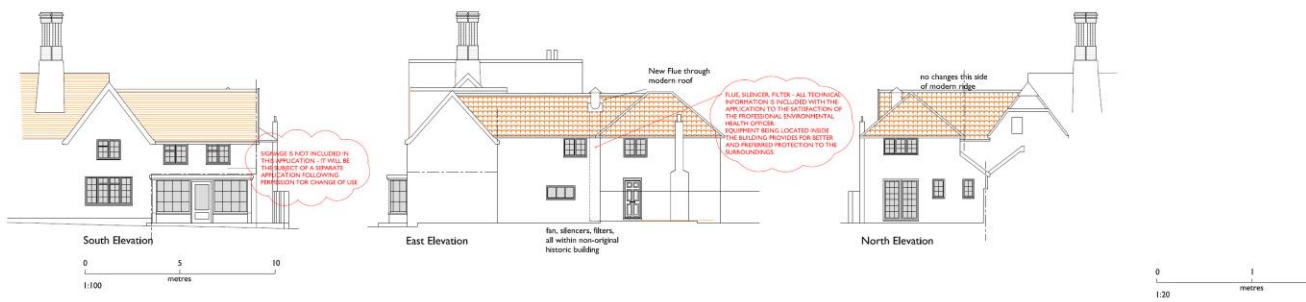
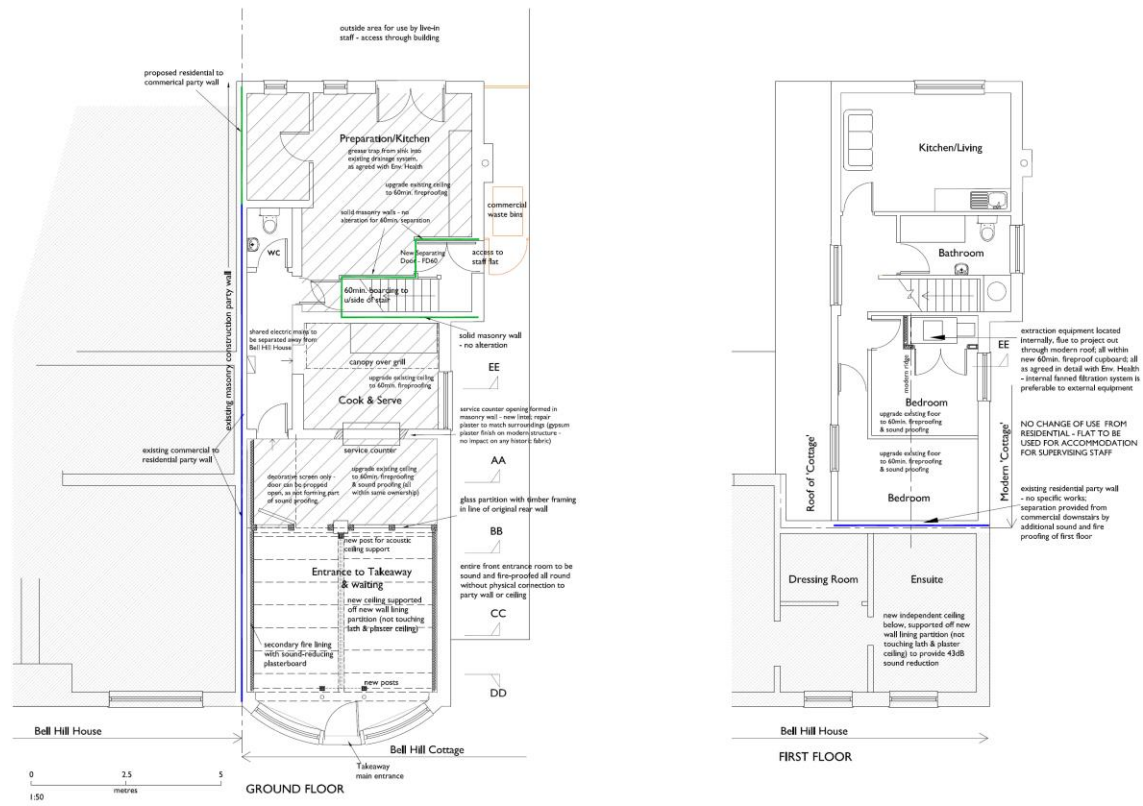


First Floor Plan



# Proposed Elevations and Floor Plans

Slide 12



## Street Scene Showing Fast Food Outlets

Slide 13







## Photographs

Slide 14



## 3D Models

Slide 15





## Previous Plan / Historic Background (if required) Slide 16

## Final Summary

- Updates since writing the report
- Conclusions and Key Material Points
- Any further details around Recommendation, Conditions and Obligations.

**Recommendation from Officers is for  
*Approval / Refusal / Other* as detailed within  
report.**



